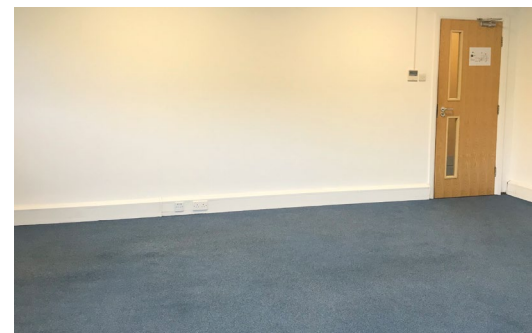


Unit 1

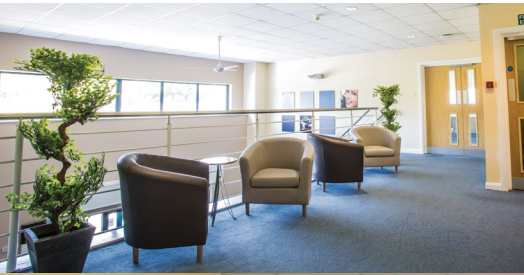
Size:
38.40m²



- ✓ Spacious, modern high quality unit
- ✓ Secured access to each office
- ✓ 24 hour access, 7 days a week, 365 days per year
- ✓ State-of-the-art IT and technology
- ✓ Enterprise Telephony Services
- ✓ Building maintenance
- ✓ Building insurance
- ✓ Communal area cleaning and maintenance
- ✓ Security, fire alarm and heating system maintenance
- ✓ Waste (to agreed level)
- ✓ Individually controlled air conditioning units
- ✓ Gas heating
- ✓ Electricity
- ✓ Water rates
- ✓ Reception service
- ✓ Post in
- ✓ Site landscaping
- ✓ Free car parking
- ✓ Use of communal kitchen and breakout areas
- ✓ Access to a range of additional services provided at North East BIC
- ✓ Use board room as a training / conference facility (additional charges apply)
- ✓ Reduced risk – only pay for the space and services you use



Grow your business at The Hub - contact us today!



Flexible managed office space



Virtual office space



Business support



Meeting room hire

Located less than two minutes' drive from the A1, The Hub in Washington provides flexible, modern office space and business support services to SME's in the North East.



The Hub, New Century House, Crowther Road, Washington, Tyne and Wear NE38 0AQ



0191 338 5166



space@thehubwashington.co.uk



www.thehubwashington.co.uk



@HubWashington